

Pack

Large Openings

Interior or Exterior

Standard speed for most common sizes is 40" per second both open and close. The Pack door has a belted opening system allowing it to work well even in busy environments. Instead of coiling around a drum, the belted opening system lifts and folds the panel. This allows for large panels with metal or fiberglass wind ribs to move quickly without undo stress caused by coiling. The result is a practical solution for large openings with or without wind or air pressure and smaller openings with wind or air pressure.

The pack door can be installed on either the inside or outside of a building. It has a simple modular design making for a fast and easy installation. The door design consists of a U-shaped column section finished with a rubber seal on each side to protect the curtain when opening.



Technical Data

Maximum Sizes	20 ft by 20 ft
Opening Speed	Up to 40" / second
Closing Speed	Up to 40" / second
Door Operation	Gravity driven
Wind Class	EN 124424 118" x 118" class 4 197" x 197" class 3 315" x 315" class 2
Side Frame	Galvanized steel standard
Covers	Galvanized steel motor cover
Control panel	Galvanized steel painted RAL 7035, control card with motor starter
Door Curtain	Reinforced 35 oz PVC with weighted bottom edge. For colors, see the approval drawing.
Motor(s)	IP 54, 2 HP 208, 230, 460VAC 3PH 60Hz
Limit Positioning	Mechanical switch
Safety Edge	Wireless
Performance Cycles	1,000,000

* (depending on door size)

Features & Benefits

Fast Up to 40" per second both opening and closing

Safe Photo eyes with other safety features available.

Low Maintenance Simple design with few moving parts

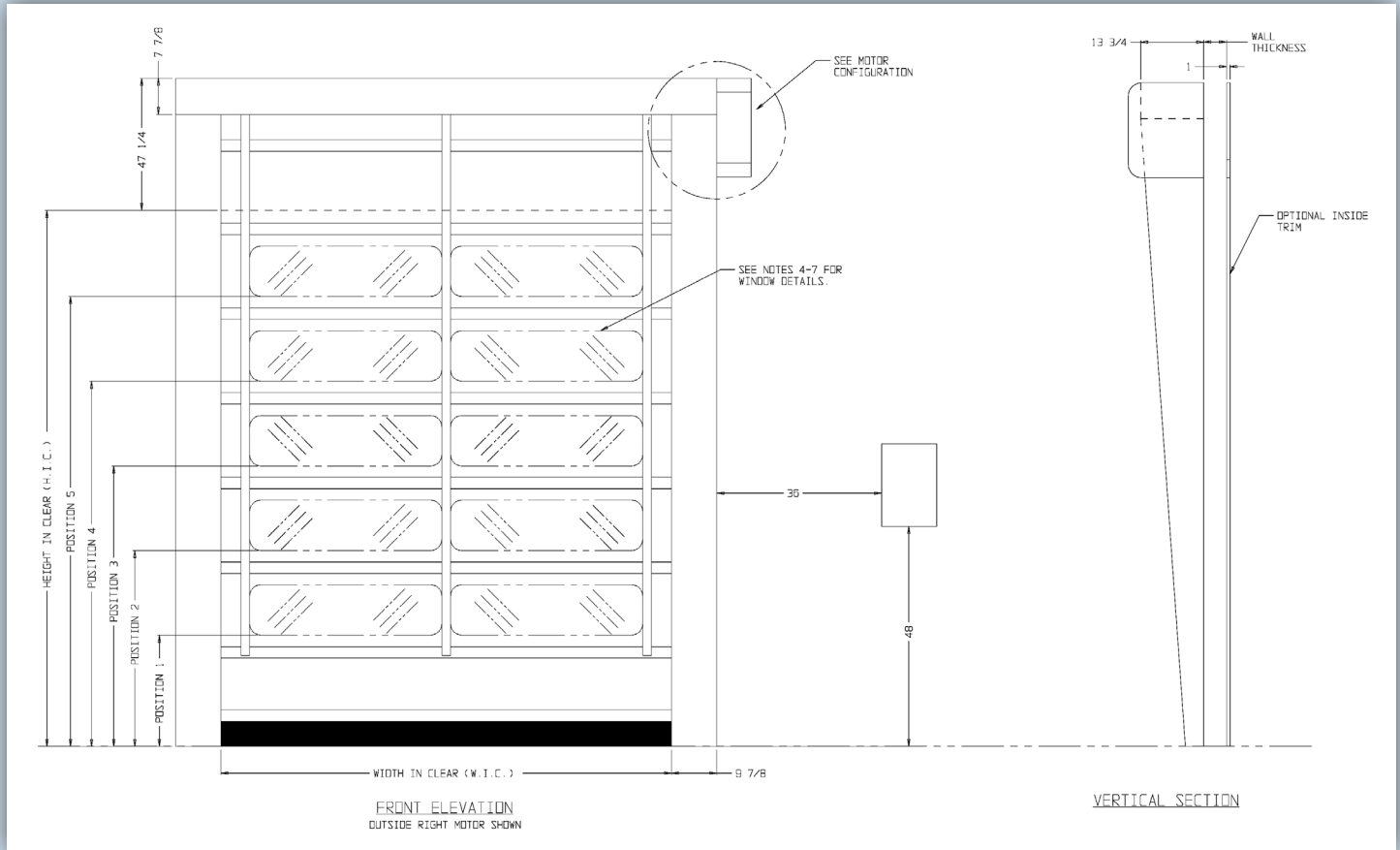
Easy to Install Modular self-supporting frame and Pre-wired control panel to motor

Quick Lead Times

Proven Reliable Design

JAMISON BMP®

Technical Data



TYPE OF COATING AND FINISH

Type of Coating	PVC		
Finish	both sides laquered		
Flame spread	ISO 3795 < 3.94 in/min		
Curtain	35	oz/yd ²	DIN EN ISO 2286-2
Tensile strength warp/weft	491 / 457	lb/in	DIN EN ISO 1421/V1
Tear strength warp/weft	112 / 112	lb	DIN 53363
Adhesion	11.4	lb/in	LB 3.04-1
Cold resistance	-40	°F	DIN EN 1876-1
High temperature	158	°F	LB 3.15
Light fastness	>6	Note, Value	DIN EN ISO 105 B02
Crack resistance	no cracks	100000	DIN 53359 A

BASE FABRIC

Material	PES		DIN ISO 2076
Yarn count	1100	dtex	DIN ISO 2060
Weave	P2/2		
Remarks	complies with DIN EN 12641-2		



Jamison Door Company • P.O. Box 70 • Hagerstown, MD 21741-0070
 TOLL FREE: 1-800-532-3667 or 301-733-3100 • FAX: 240-329-5155
 INTERNET: <http://www.jamisondoor.com>
 E-MAIL: contact@jamisondoor.com